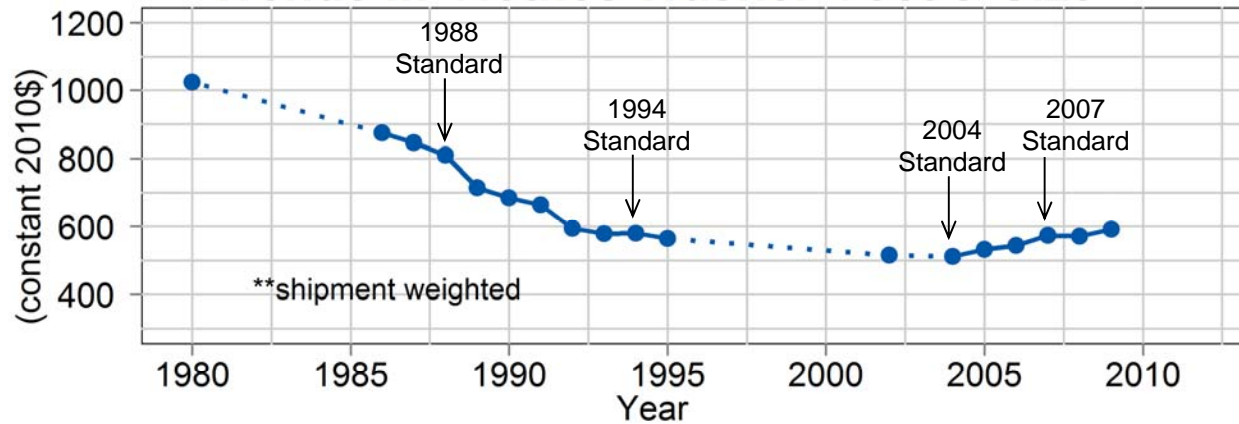


Trends in Clothes Washer Cost & Size

**RETAIL
PRICE**



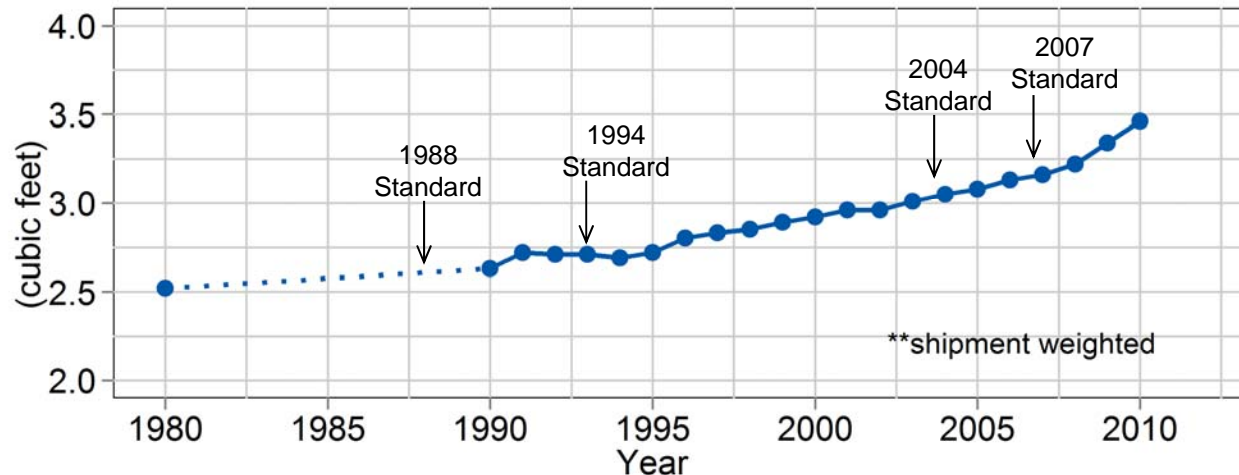
Standard References

1988 Standard: Established by Congress, National Appliance Energy Conservation Act

1994 Standard: 56 FR 22279

2004/07 Standard: 66 FR 3314 (implemented in two phases)

SIZE



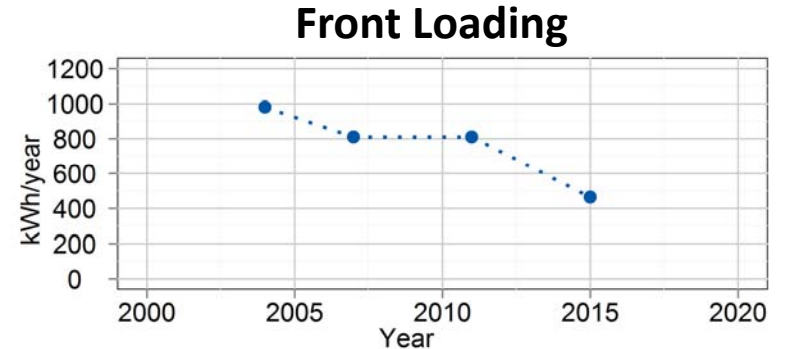
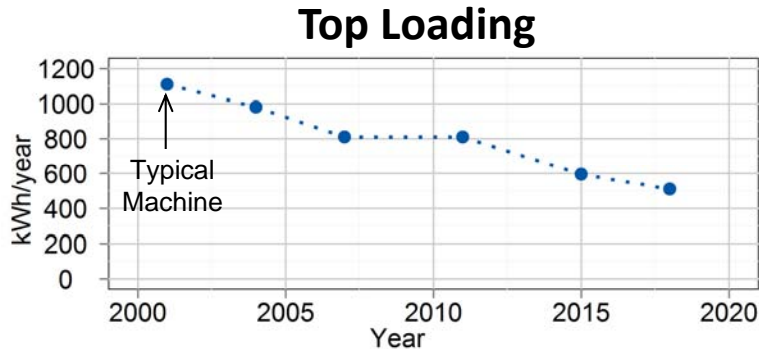
****Dates shown here are effective dates, not issued.**

Sources

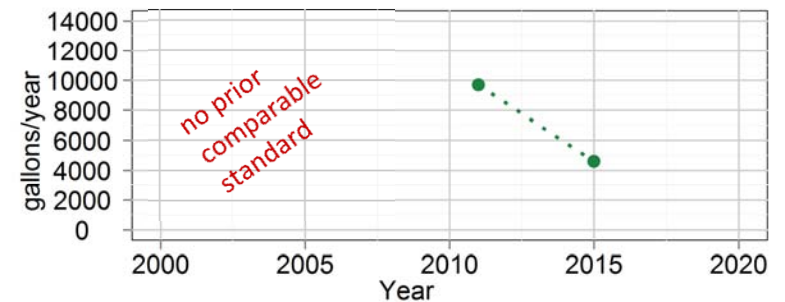
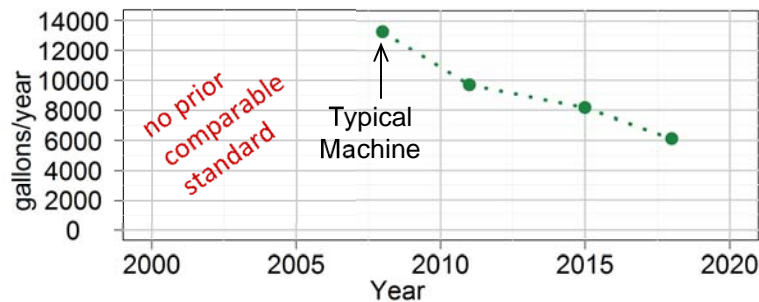
- DOE Technical Support Document, Appendix 5-B, 2012 [http://www1.eere.energy.gov/buildings/appliance_standards/residential/pdfs/rcw_dfr_tsd_app5b.pdf]
- DOE Technical Support Document, Appendix 9-A, 2012 [http://www1.eere.energy.gov/buildings/appliance_standards/residential/pdfs/rcw_dfr_tsd_app9a.pdf]
- DOE Technical Support Document, Chapter 3, 2012 [http://www1.eere.energy.gov/buildings/appliance_standards/residential/pdfs/rcw_dfr_tsd_ch3.pdf]
- DOE Technical Support Document, Chapter 6, 2000 [http://www1.eere.energy.gov/buildings/appliance_standards/residential/pdfs/chapter_6_mark-ups.pdf]

Annual Energy & Water Use for Washing Machines at Standard Levels

ENERGY USE



WATER USE



Standard References

1988 Standard: Established by Congress, National Appliance Energy Conservation Act

1994 Standard: 56 FR 22279

2004 /2007 Standard: 66 FR 3314 (implemented in two phases)

2011 Standard: Established by Congress, Energy Independence and Security Act

2015/2018 Standard: 77 FR 32308 (implemented in two phases)

****Dates shown here are effective dates, not issued.**

Note: Calculations for energy and water use assume a tub capacity of 3.46 cubic feet for all washers (AHAM, Trends in Energy Efficiency 2010). 295 cycles/year are assumed for all calculations per DOE's 2012 final test procedure rule [77 FR 13888].